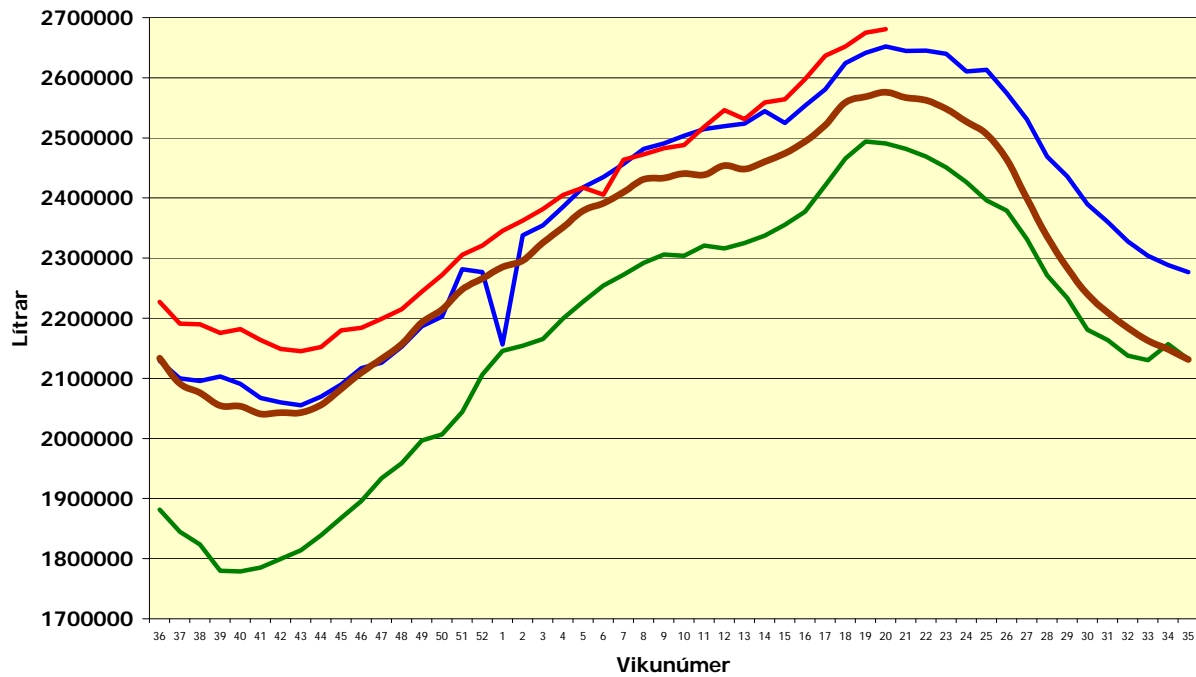




Innvigtun mjólkur á landinu eftir vikum



— 05/06

— 06/07

— 07/08

— 120 millj. litra

Vika	05/06	06/07	07/08	Mismunur 06/07 - 07/08		Mismunur 05/06 - 07/08	
36	1.881.329	2.129.098	2.227.130	98.032	4,60%	345.801	18,38%
37	1.844.710	2.099.945	2.191.102	91.157	4,34%	346.392	18,78%
38	1.823.428	2.095.432	2.189.705	94.273	4,50%	366.277	20,09%
39	1.779.787	2.103.259	2.175.672	72.413	3,44%	395.885	22,24%
40	1.778.883	2.090.666	2.182.150	91.484	4,38%	403.267	22,67%
41	1.785.459	2.067.542	2.164.013	96.471	4,67%	378.554	21,20%
42	1.799.552	2.059.959	2.149.060	89.101	4,33%	349.508	19,42%
43	1.814.191	2.055.371	2.145.071	89.700	4,36%	330.880	18,24%
44	1.838.889	2.069.369	2.151.903	82.534	3,99%	313.014	17,02%
45	1.867.587	2.089.762	2.179.849	90.087	4,31%	312.262	16,72%
46	1.896.073	2.117.051	2.184.102	67.051	3,17%	288.029	15,19%
47	1.933.604	2.126.063	2.199.024	72.961	3,43%	265.420	13,73%
48	1.959.038	2.152.819	2.214.746	61.927	2,88%	255.708	13,05%
49	1.996.778	2.186.908	2.244.164	57.256	2,62%	247.386	12,39%
50	2.006.539	2.202.708	2.271.682	68.974	3,13%	265.143	13,21%
51	2.044.154	2.281.210	2.305.398	24.188	1,06%	261.244	12,78%
52	2.106.024	2.276.597	2.320.877	44.280	1,95%	214.853	10,20%
1	2.145.604	2.156.333	2.345.425	189.092	8,77%	199.821	9,31%
2	2.154.161	2.338.101	2.362.368	24.267	1,04%	208.207	9,67%
3	2.165.262	2.354.451	2.381.677	27.226	1,16%	216.415	9,99%
4	2.199.457	2.385.288	2.405.216	19.928	0,84%	205.759	9,35%
5	2.227.699	2.417.878	2.417.185	-693	-0,03%	189.486	8,51%
6	2.254.480	2.435.022	2.405.472	-29.550	-1,21%	150.992	6,70%
7	2.272.433	2.456.517	2.463.814	7.297	0,30%	191.381	8,42%
8	2.292.359	2.481.614	2.472.890	-8.724	-0,35%	180.531	7,88%
9	2.306.021	2.490.967	2.482.835	-8.132	-0,33%	176.814	7,67%
10	2.304.027	2.503.626	2.488.028	-15.598	-0,62%	184.001	7,99%
11	2.320.613	2.514.583	2.518.589	4.006	0,16%	197.976	8,53%
12	2.316.119	2.519.522	2.546.240	26.718	1,06%	230.121	9,94%
13	2.325.248	2.523.672	2.531.327	7.655	0,30%	206.079	8,86%
14	2.337.406	2.544.641	2.558.999	14.358	0,56%	221.593	9,48%
15	2.355.400	2.525.025	2.564.029	39.004	1,54%	208.629	8,86%
16	2.377.267	2.553.825	2.597.708	43.883	1,72%	220.441	9,27%
17	2.420.774	2.580.843	2.636.717	55.874	2,16%	215.943	8,92%
18	2.465.684	2.624.432	2.651.868	27.436	1,05%	186.184	7,55%
19	2.493.985	2.641.536	2.674.808	33.272	1,26%	180.823	7,25%
20	2.490.583	2.651.973	2.680.905	28.932	1,09%	190.322	7,64%

Samtals **78.380.607** **85.903.608** **87.681.748** **1.778.140** **2,27%** **9.301.141** **10,83%**